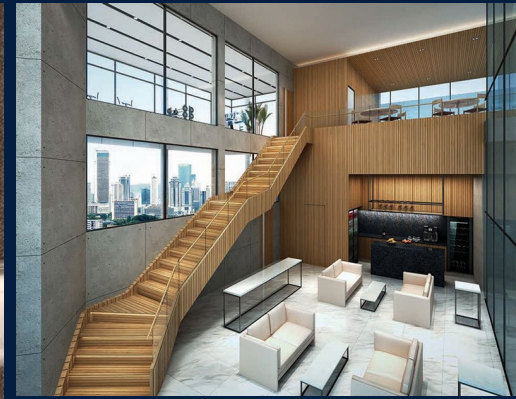


FOR SALE

RESIDENTIAL - CONDOMINIUM 945SQFT (88SQM) / CALL FOR PRICE!

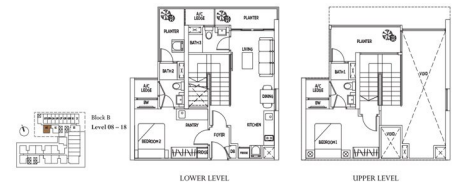
+65 9069 2684



Penthouse + Dual Key

Type D (Corner) | 945 sq ft

④ Dual-key ⑤ Loft Unit



RESIDENTIAL - CONDOMINIUM

WISMA INFINITUM, 18 JALAN DEWAN SULTAN
SULIMAN, 50300, KUALA LUMPUR, WILAYAH

- LISTING ID: SGLD85781300
- TENURE: N/A
- TITLE: N/A
- SIZE BUILT-UP: 945SQFT (88SQM)
- SIZE LAND: 1.389AC (0.562HA)
- NO. OF FLOORS: 43
- FLOOR/LEVEL: N/A - HIGH FLOOR
- BED ROOMS: 2
- BATH ROOMS: 3
- MAIDS ROOMS: N/A
- PARKING SPACES: N/A
- LAYOUT TYPE: CORNER
- FACING: N/A
- VIEWING: OTHER
- SELLING PRICE: **CALL FOR PRICE!**
- COMPLETION YEAR: 2020
- CONDITION: ORIGINAL CONDITION
- FURNISHING: PARTIALLY FURNISHED
- LISTING DATE: MAY 17, 2021

THE LUXE

Spacious 945sqft (88sqm), partially furnished, 2 bedroom, 3 bathroom Condominium for Sale. Completion in 2020, this high floor corner unit is in original condition. This property is currently vacant and ready to move in. Location: Kuala Lumpur, Malaysia.

INTERIOR FACILITIES

- Air-Conditioning
- Balcony
- Private Garden

OTHER INTERIOR FEATURES

- Cooker Hob/Hood
- Fridge
- Oven / Microwave
- Washing Machine

EXTERIOR FACILITIES

- 24 Hours Security
- Function Room
- Jacuzzi
- Lounge

VISIT THIS PROPERTY AT: <https://www.apexsanctuary.com/property/SGLD85781300>



RYAN LEE - HUTTONS ASIA PTE LTD

3 Bishan Place #05-01 CPF Bishan Building
D20, 579838, Singapore

+65 9069 2684
WhatsApp Me

ryanbilee@outlook.com

L3008899K
R055485I

<https://www.apexsanctuary.com>



Scan QR Code

Huttons
The Agency of Choice
Call for Viewing
+65-90692684